



ADA  
YAPI

Ada Life



## VILLA ADA



## ADA YAPI ISLAND



## ADA DREAMS HISTORY

Ada Yapı has come to the forefront in its region with its high quality and luxurious buildings since 2000.







*A Peaceful Calm and Comfortable Life with  
Your Loved Ones Is Not a Dream*



Ada life is 7 minutes from Dalaman Airport and offers a unique transportation location. At the same time, it is 12 minutes away from Göcek Center due to its location. Moreover Ada Life offers easy access to the points especially like Sarsala Cove, Bedri Rahmi Cove, Kille Cove, Göcek Island, Tersane Island, Domuz Island, where the unique coves and Seasides/ Beaches are.

Ada Life consist of 128 flats, Ada Life II consists of 24 flats which has 152 residences in total.



Fethiye and Göcek are located among the important cities of the Lycian period. The ancient cities left over from the Persians, Romans and Byzantines in the region, which has been home to many civilizations throughout history, contribute to the tourist position of the region.

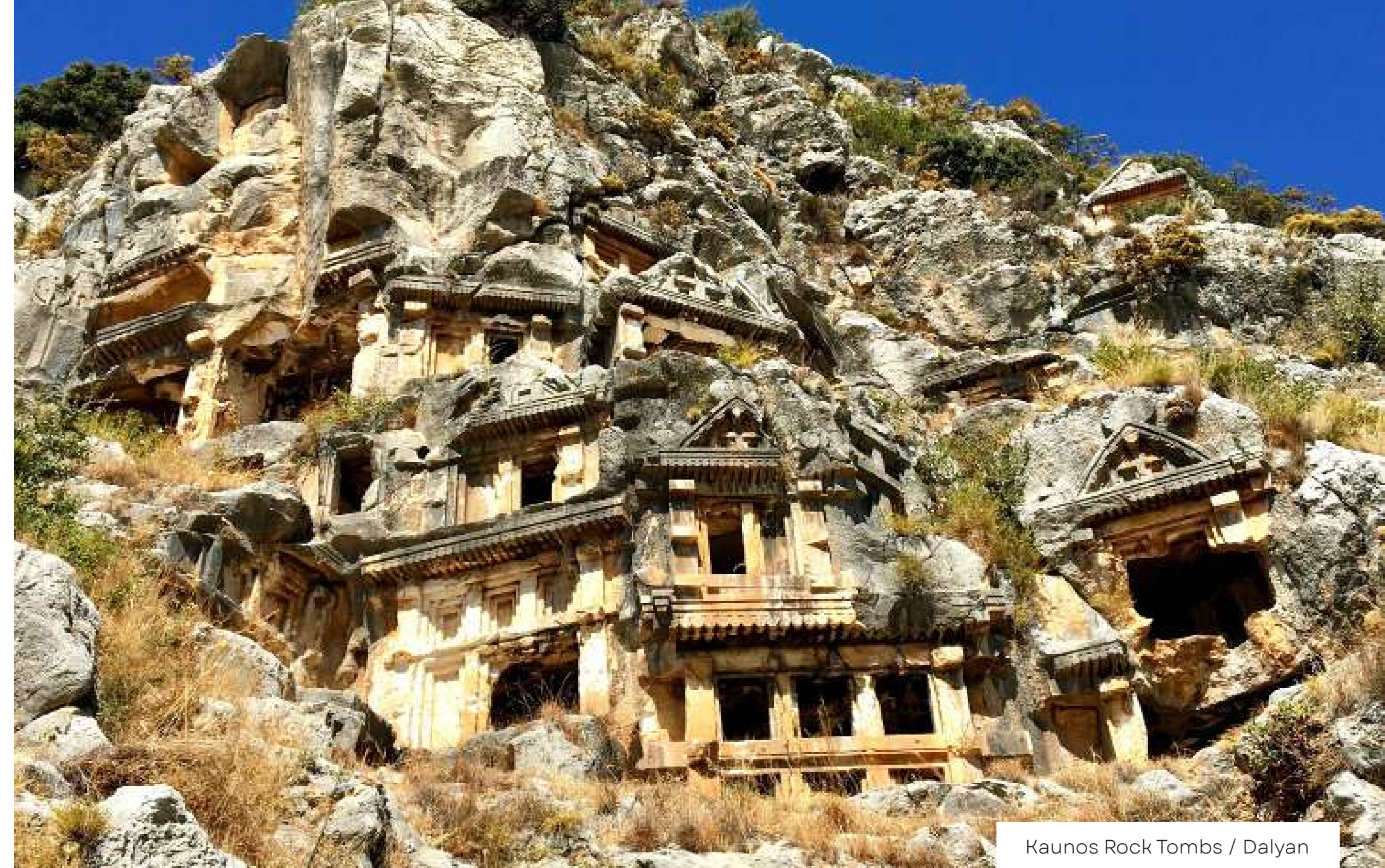
One of the popular centers of the region, the Lycian Way is home to Letoon, Artemis and Apollon Temples.

Kayaköy, whose history dates back 1700 years, is shown among the important settlements. Butterfly Valley offers dreamy landscapes with its butterfly diversity. On the other hand, Saklıkent Canyon offers a natural habitat with its steep slopes and icy waters. You can live a peaceful and comfortable life in this unique geography if you wish.



Kayaköy / Fethiye

*An Invitation to A Journey That Extends Into History*



Kaunos Rock Tombs / Dalyan



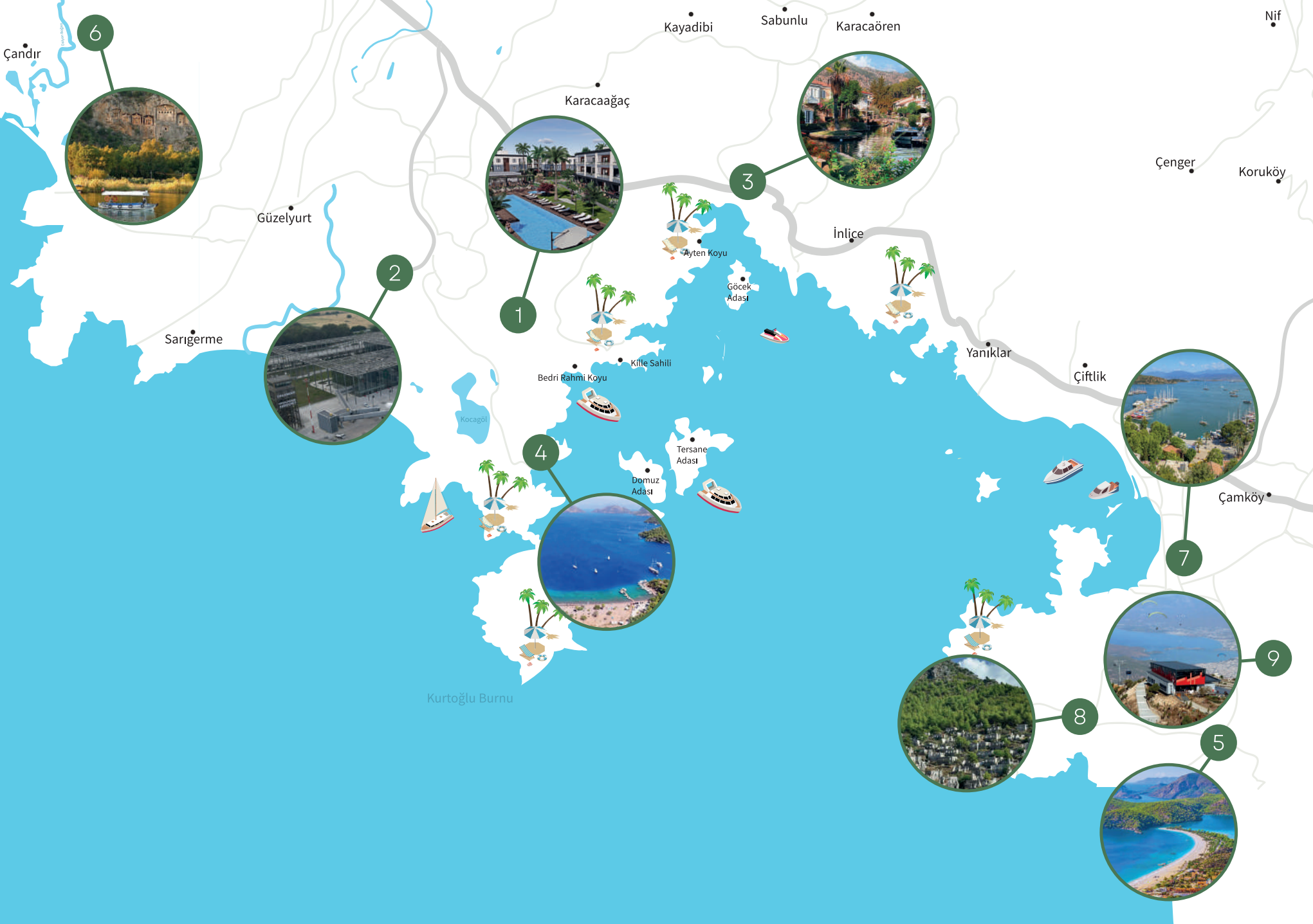


*You will be fascinated by its beaches with unique beauties*

Fethiye and Göcek appeal to blue lovers with their flawless natural beauties. Ölüdeniz, located under the shadow of Babadağ (Mountain), attracts attention with its wide beach and national park. Sarigerme Beach, which has fine sand, offers a fascinating landscape with its clean sea.

Ada Life offers easy access to the points especially like Sarsala Cove, Bedri Rahmi Cove, Kille Cove, Göcek Island, Tersane Island, Domuz Island, where the unique coves and Seasides/Beaches are.





*It is no longer a dream for you to live a peaceful and comfortable life away from the noise of the city with ease of transportation*

- 1 / ADA LIFE
- 2 / DALAMAN AIRPORT 7 dk.
- 3 / GÖCEK 12 dk.
- 4 / SARSALA COVE 20 dk.
- 5 / ÖLÜDENİZ 55 dk.
- 6 / DALYAN 30 dk.
- 7 / FETHİYE CENTER 35 dk.
- 8 / KAYAKÖY 45 dk.
- 9 / BABADAĞ 45 dk.



Our social facilities are at your service to provide you a fun and safe activity opportunity with your loved ones.



- Walking-track
- Outdoor Sport Fields
- Cafe
- Security



- 3 Adult's Pools
- 2 Children's Pools
- Children's Park





*The pleasure of a unique holiday is always experienced with the swimming pools included within the scope of our project where all kinds of social living areas are offered*







*Children's Playgrounds For the Safety  
and  
Happiness of Children*

Ada Life has 3 swimming pools in total, including 2 adult swimming pools and 1 Children's swimming pool. With our project that promises you a peaceful and safe life and ensures that your social needs are met, you can get the life opportunity you dream of. You can make a significant investment in your future with our residences, which offer a pleasant life with their geographical location and immaculate air.



Within the scope of Ada Life, individual or group sports activity areas are offered in the open area, especially hiking trails. Ada Life is preparing opportunities for individuals and extended families to devote time to themselves in addition to the residences that open up to a quality and comfortable life.







*For those who can't do without socializing the cafe is just the job*



*A Unique Life  
Full of reliance*

With Ada Life safe site service, which you can call the address of peace, you will never worry about your housing security.

[www.adalifedalaman.com](http://www.adalifedalaman.com)





## Location Plan

Ada Life: 128 Flats  
Ada Life II: 24 Flats



## *Construction Technique*

- Considering the numerical data revealed by the earthquake that occurred in Kahramanmaraş on February 6, 2023, the foundation, columns and beams of our project were enlarged and strengthened.
- The entire reinforced concrete structure system will be manufactured using a raft foundation and C30 concrete.
- Exterior walls will be made of insulation bricks, and between flats Eps insulated bricks will be used.
- Köster brand waterproofing additive will be used in the foundation of the building.

## *Terrace Roof*

Insulation layers on a non-walkable terrace roof:

- Polyurethane waterproofing on reinforced concrete flooring
- Protective concrete
- Sliding water Insulation
- 5 cm Xps thermal insulation
- Dimpled Sheet on felt, and Drainage Gravel

## *Entrance, Hall, Corridor, Living Room and Rooms*

- Floor: 10 mm laminate flooring
- Wall and ceiling: wipeable satin paint on gypsum plaster
- Specially designed coat rack and washing machine cabinet.
- Floors will be covered with 10 mm laminate parquet, and wipeable satin paint will be applied on gypsum plaster on the walls.

## *Kitchen*

- Floor: 10 mm laminate flooring
- Ceiling: wipeable satin paint on gypsum plaster, countertop: 1st class ceramic coating between cabinets, kitchen countertops are Belenco/Coante quartz surface
- 1st class professional kitchen cabinets (MDF Lam)
- Kitchen cabinet doors: high gloss
- Arçelik brand built-in aspirator

## *Bathrooms and Toilets*

- Floor and wall: Vitra brand ceramics
- Ceiling: satin plaster and water-based paint on green plasterboard suspended ceiling
- Furniture: 1st Class MDF bathroom cabinets
- Sanitaryware and armature: Vitra Artema brand
- Concealed cistern: Grohe brand
- Water heater: Arçelik brand

## *Heating and Cooling Systems*

- Air conditioning infrastructure will be ready in all rooms and living room. Central Heating PPRC pipe infrastructure will be ready.
- Air conditioner outdoor units will be collected at a single point at the rear of the building.

## *Electrical System*

- 1st Class junctionless electrical installation will be prepared in accordance with TSE (Turkish Standards Institution) standards in all flats. The cable system will be halogen-free fireproof cable.
- All flats will have Audio brand intercom system.
- Switch sockets Viko-Karre series
- There will be an internal telephone system on site.
- TV, internet infrastructure in living room and bedroom.
- Hidden led lighting in living room-kitchen, bedroom.
- There will be a generator for environmental lighting and security systems.

## *Balcony*

- Floor: Vitra brand ceramic coating.
- Wall: silicone reinforced acrylic exterior paint on plaster
- Balcony handrails: Glass railing on 1st class marble and metal railing system with barrier will be used

## *Doors*

- Block entrance door: aluminum joinery special design.
- Flat entrance door: Boyut brand wooden patterned steel door specially designed.
- Interior doors are specially designed and acrylic paint on mdf.
- 1st class material is used in all door applications.

## *Windows*

- Exterior doors and windows will be made of 70 anthracite color Pimapen brand PVC, and the windows will be 4+12+4 comfort thermal glass.

## *Landscape*

- Modern landscaping areas, sitting and resting places, tartan covered walking paths, two adult and 1 children's pools and green areas will be arranged in the site in accordance with the architectural project, and planting work will be carried out.

## *Social Areas*

- Cafeteria serving within its own structure, outdoor sports fields and Children's playgrounds will be arranged

## *Security*

- Security controlled entrance and exit to the site will be provided. There will be at least one security checkpoint at the site entrance.
- The cameras around the site will provide 24-hour security.











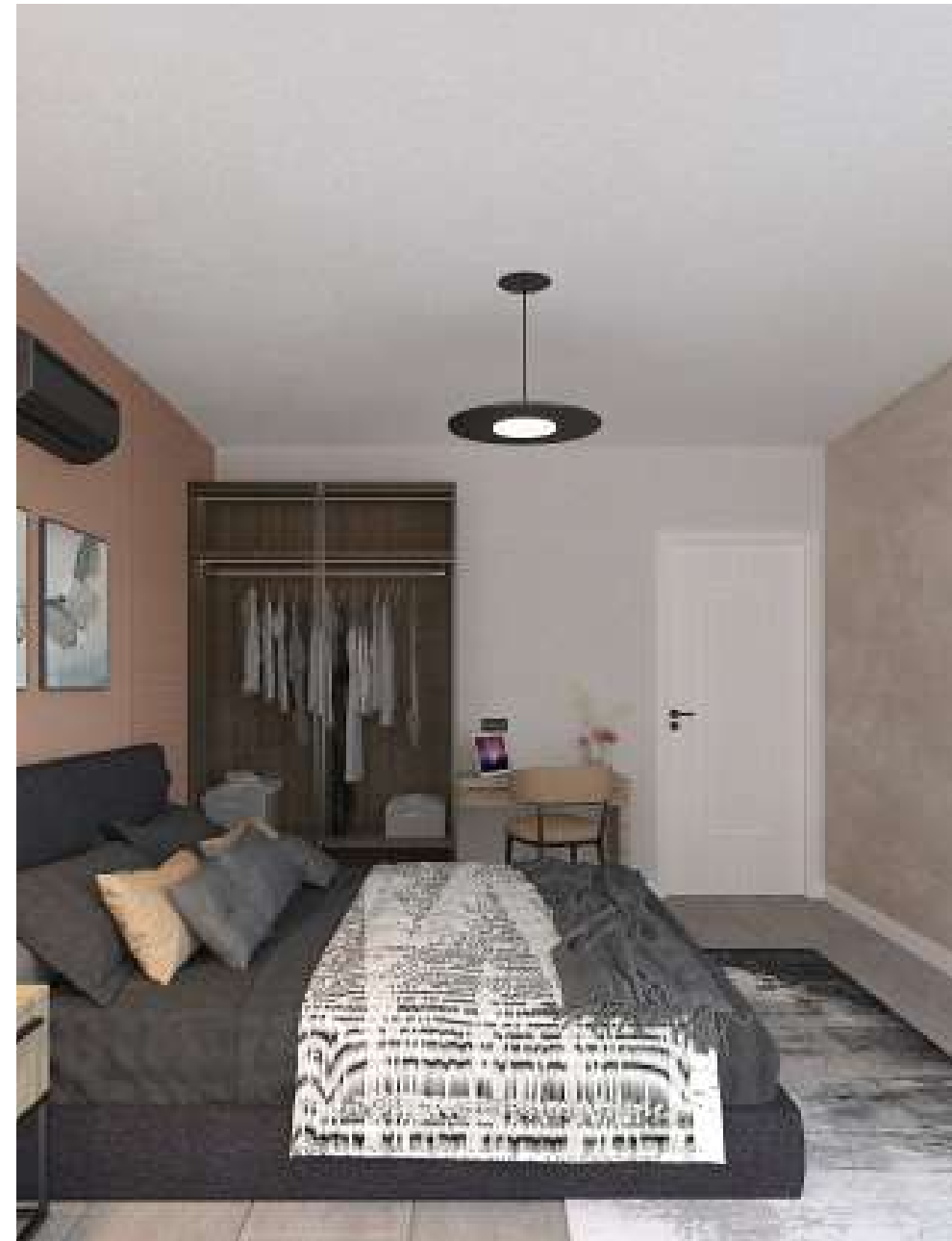


## 2+1 Detached Entrance

Yard.....	30,85 m <sup>2</sup>
Terrace.....	17,65 m <sup>2</sup>
Hall+Kitchen.....	21,99 m <sup>2</sup>
Restroom / Bathroom .....	4,69 m <sup>2</sup>
First Bedroom .....	11,22 m <sup>2</sup>
Second Bedroom.....	10,21 m <sup>2</sup>
Restroom / Bathroom.....	4,13 m <sup>2</sup>

Total Gross Area (including Terrace): 100,00 m<sup>2</sup>









## 2+1 Garden Floor

Yard.....	10,00 m <sup>2</sup>
Terrace.....	8,46 m <sup>2</sup>
Hall+Kitchen.....	19,38 m <sup>2</sup>
Restroom / Bathroom.....	4,29 m <sup>2</sup>
First Bedroom .....	9,69 m <sup>2</sup>
Second Bedroom.....	12,40 m <sup>2</sup>

Total Gross Area (including Terrace): 89,00 m<sup>2</sup>







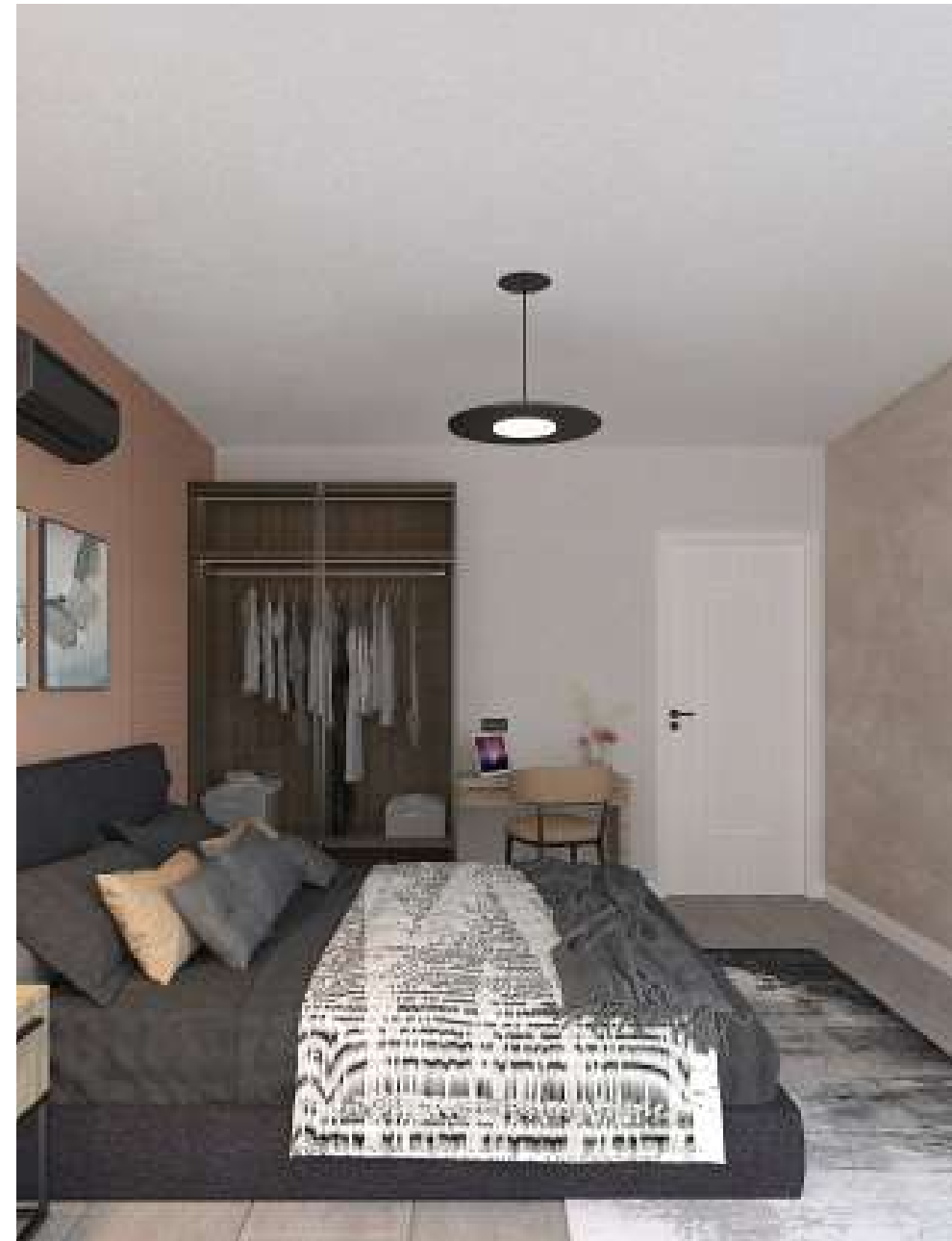


## 1+1 Garden Floor

- Yard..... 8,23 m<sup>2</sup>
- Terrace ..... 8,40 m<sup>2</sup>
- Hall+Kitchen..... 19,38 m<sup>2</sup>
- Restroom / Bathroom ..... 4,29 m<sup>2</sup>
- First Bedroom..... 11,39 m<sup>2</sup>

Total Gross Area (including Terrace): 69,00 m<sup>2</sup>









**2+1 / First and Second Floor**

- Balcony..... 12 m<sup>2</sup>
- Hall+Kitchen ..... 21,99 m<sup>2</sup>
- Restroom / Bathroom ..... 3,36 m<sup>2</sup>
- First Bedroom ..... 13,06 m<sup>2</sup>
- Second Bedroom ..... 8,93 m<sup>2</sup>
- Restroom / Bathroom..... 4,32 m<sup>2</sup>

Total Gross Area (including Balcony): 97,00 m<sup>2</sup>

Total Gross Area (including Balcony): 87,00 m<sup>2</sup>

With two different square meter options.









## 1+1/ First and Second Floor

Balcony .....	11,85 m <sup>2</sup>
Hall+Kitchen .....	20,91 m <sup>2</sup>
Restroom/Bathroom .....	4,64 m <sup>2</sup>
Bedroom.....	9,91 m <sup>2</sup>

Total Gross Area (including Balcony): 66,00 m<sup>2</sup>









+90 542 238 48 93

[www.adalifedalaman.com](http://www.adalifedalaman.com)

[info@adalifedalaman.com](mailto:info@adalifedalaman.com)

Merkez Mh. Cengiz Topel Cad. No: 155 Dalaman / Muğla